



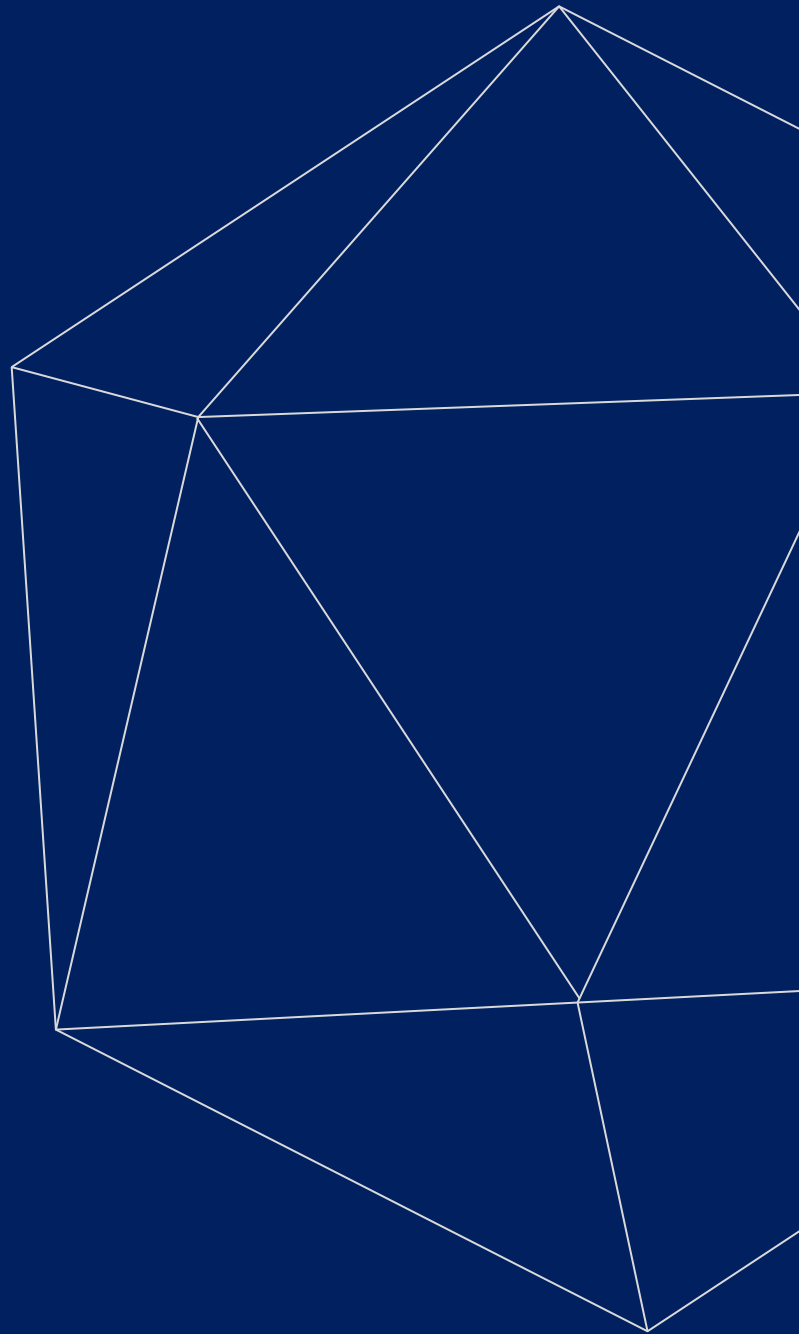
MEDICAL LINES

TROLLEY COLOR DOPPLER



Kalstein®

A different accompaniment, at your service





Kalstein®

A different accompaniment, at your service

OUR SERVICES

Benefits and Support

In Kalstein France, we take care of the full satisfaction of our customers, that is why we provide value-added services of the highest level based on our experience.



Online Inductions and Trainings

In any part of the world, receive your induction or training from our specialized team of engineers



Quick Response

Our work team is always available to response all your consults or questions, in order to support you in any situation.



#Letsgivemore ❤️

Thanks to your purchase, a donation will be made to a non-profit foundation that fights against breast cancer and helps most vulnerable communities.



Technical Support

Enjoy of personalized advice for the correct preventive and corrective maintenance of your equipment, thanks to Kalstein's manuals and articles, special catalogues and video tutorials.



Delivery Logistics

We take care of all the necessary logistics for the dispatch of your goods, whether is by sea, land or air.



Kalstein Worldwide

With more than 25 years growing with our customers, Kalstein's multiformat and modern content, is now present in more than 10 countries and increasing.



Trolley Color Doppler

Model YR05149

Application

Abdomen / Cardiac / Obstetrics / Gynecology / Urology / Andrology / Small Parts / Vascular / Pediatrics / Musculoskeletal

Electrical Power

Voltage 100 V-240 V

Power DC12.8V 3A

Frequency 50/60 Hz

Physical Specifications

Equipment size 365mm×300mm×75mm

Equipment weight 5.5kg

Packing size 490mm×270mm×490mm

Packing weight 10kg

Connectivity/Media/Peripherals

Transducer Ports 4

USB Ports 2

Hard Disc 64GB (SSD), 120G/200GB SSD (Optional)

Ethernet Port 2(100Mb/1000Mb)

External Display VGA, HDMI,

Printer(Optional) USB Printer, Digital Laser Printer, Digital B/W

Thermal Printer

Printing Area Image, report, Image+report

Cine/Image Memory

Cine Memory 1200 frame (max)

Cine Review Speed 1, 2, 4, 8

Cine Review Loop YES

Cine Capture Function YES

DICOM Connectivity: DICOM3.0 Compliant

Image Storage

Storage Format: PNG, AVI, BMP, JPEG, DICOM

Export Video Format: AVI

Export Image Format: PNG, JPEG, BMP, DICOM

USB Flash Drive

Technology

Panoramic Imaging Tech

All-digital signal processing Tech

Multi-beam formation Tech

Speckle Reduction Tech

Tissue Harmonic Imaging Tech

Dynamic Tissue Optimization Tech

Duplex & Triplex Synchronous Display

Directional Power Doppler

Imaging Parameters Preset

Tissue Special Image

PW Auto Trace

Update in line

CF+B mode in one screen

Complex Model Imaging

IMT auto measurements

Virtual convex array

Trapezoidal imaging

General Performance

Digital Broadband 12288 channels

Beam-former Re-programmable

Transmit Voltage Adjustable (15 steps)

Beam-former Frequency Range 1~40 MHz

Pan/Zoom

Real-Time Image Zoom, Zoom Range: 100%~400%,

Up/Down/Left/Right Inversion



Hardware Specification

LED Monitor

Size (Diagonal) 15"

Contrast Ratio 800:1

Resolution 1024×768 pixels

Brightness 230 cd/m²

Color Depth 24bit

Rotate Angle ± 90°

Grey Levels 256

Software: 4D Software, PW/CW software

Embedded Speakers

Impedance: 4Ω

Power: 5 W

UPS (Optional)

Imaging Performance

Startup Time (Max) Avg. < 90 seconds

Preset Switching Time Avg. < 1 second

Storage Time (Image to Disk) Avg. < 0.5 second

Imaging Modes

B, 2B, 4B, M, B/M, B/C, B/D, B/C/D, B/CFM/D, PDI Color, Dual Color, Simultaneous 2D/Color Compound, PW, Duplex/Triplex, CFM, CDE, PD, Directional PD, CD, B+CF



#Let'sgivemore

Thanks to your purchase, a donation will be made to a non-profit foundation that fights against breast cancer and helps most vulnerable communities.



All rights reserved © KALSTEIN France S. A. S.,
2 Rue Jean Lantier • 75001 Paris •
+33 1 78 95 87 89 / +33 6 80 76 07 10 •
<https://kalstein.eu>
KALSTEIN FRANCE, S. A. S.



Trolley Color Doppler

Model YR05149



User Interface

- ✓ User Permission setting
- ✓ Intuitive Windows-based operating principles
- ✓ User-centric control panel with Home Base layout and control customization
- ✓ On/Off task light and back-lit illumination of control panel
- ✓ Variable brightness indicates active state of function keys
- ✓ Easily accessible, full size QWERTY keyboard for text entry, function keys and system programming
- ✓ Cine Playback, Multiple Arrows, Configurable Worksheets, Exam Review, Pictograms (Body Marks), System Setup Menu
- ✓ Online attention function, tell the user how to operate in the next step

B-Mode

- Maps 17
- Focus Count Max. 4
- Gain 0~255
- TGC 8 Sliders
- Dynamic Range 0~150dB
- Depth Max. 30cm
- Acoustic Power 0 ~ 15
- Chroma 0~7
- Grayscale Levels 256
- Frame Rate Max. 1028Hz
- Persistence/ Frame Average Up to 7
- Image Optimization 0~6
- Top/Bottom/Left/Right Reverse Yes
- Speckle Reduction Yes
- Second Harmonics Yes

M-Mode

- Maps 16
- Chroma 16
- Sweep Speed 3
- Gain 0~255
- Distance Point-to-Point
- Max Steer Angle 15°
- Diameter Reduction Point-to-Point Heart Rate/Time/Distance/Slope
- Side-by-Side/Bottom



Transducers

Probe	Convex Probe	Linear Probe	Intra-Cavity Probe	Micro-convex probe	4D Volume Probe	Phased Array Probe
Frequency	Central 3.5 MHz (2.0/3.0/3.5/4.0/5.5MHz)	Central 7.5 MHz (6.0/6.5/7.5,10.0/12.0MHz)	Central 6.5 MHz (5.0/6.0/6.5/7.5/9.0MHz)	Central 4.0 MHz (2.0/3.0,3.5/4.0/5.0/6.0/6.5/7.5/9.0MHz) Pediatric Use (2.0/3.0,3.5/4.0/5.5,6.5/7.5/10.0MHz)	Central 3.5 MHz (2.0/3.0/3.5/4.0/5.5, 6.5MHz)	(2.0/3.0/3.5/4.0/5.0/6.0/6.5/7.5/9.0/10.0MHz)
Pitch	0.516mm	0.352mm	0.216 mm			
Radius	60mm	N/A	10 mm			
Elements	128	128	128	128	128	128



#Let'sgivemore

Thanks to your purchase, a donation will be made to a non-profit foundation that fights against breast cancer and helps most vulnerable communities.



All rights reserved © KALSTEIN France S. A. S.,
2 Rue Jean Lantier • 75001 Paris •
+33 1 78 95 87 89 / +33 6 80 76 07 10 •
<https://kalstein.eu>
KALSTEIN FRANCE, S. A. S



Trolley Color Doppler

Model YR05149



Color Mode

Gain 0~255
 Color Maps 0~6
 Doppler Steer Angles 7 Steps
 Wall Filter 0~3
 Spatial Filtering 0~3
 Acoustical Power 0 ~ 15
 Doppler Multi-Frequency 2MHz~10MHz
 Line Density Max 256 Lines
 Persistence/Frame Average 0~7
 Bloodstream Gain 0~127
 Packet Size 8~15 Baseline/Invert/Color ROI/M-Mode

PW Mode

Gain 0~255
 D Linear Velocity 0~2
 Doppler Steer Angles 7 Steps
 Edge Enhancement 0~7
 Wall Filtering 0~3
 Audio 0~255
 Correction Angle 80°/-80°
 Doppler Multi-Frequency 2MHz~10MHz
 Pulse Repetition Frequency 2khz~6khz
 Chroma 0~7
 Baseline Adjustment 0~6
 Three Synchronizations Yes
 Spectrum Inversion Yes

Measurements Specifications

Analysis Packages

Basic, Obstetrics, Gynecology, Urology, Andrology, Cardiac, Peripheral Vascular Venous, Small Parts, Orthopedic

Basic Measurement

B-mode basic measurement Distance, Angle, Perimeter and Area (ellipse or track-based method), Volume, Histogram, Sectional Map

M-mode basic measurement Heart Rate, Time, Distance, Speed

Obstetrics

Applicable to multiple birth measurements.

All general measurements and calculations

Obstetrical data versions to calculate gestational age:

— Two fixed data revisions: Asia & Europe

— One editable data version: User Custom

— Each version can estimate the gestational age and expected date of confinement

based on measured gestational sac (GS), biparietal diameter (BPD), crown-rump length

(CRL), femur length (FL), humeral length (HL), abdominal transverse diameter (ATD),

vertebral length (LV), occipitofrontal diameter (OFD), abdominal

circumference (AC) and

head circumference (HC)

Obstetrical Report

Amniotic Fluid Index (AFI)

BPD/OFD, FL/AC, FL/BPD and HC/AC ratio

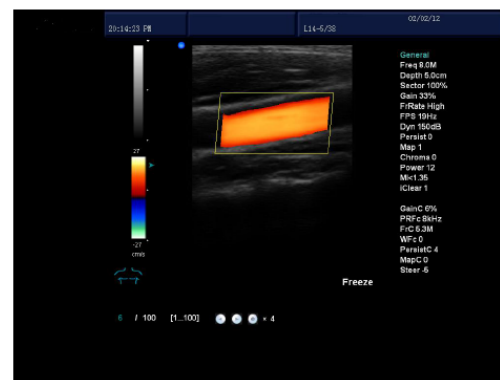
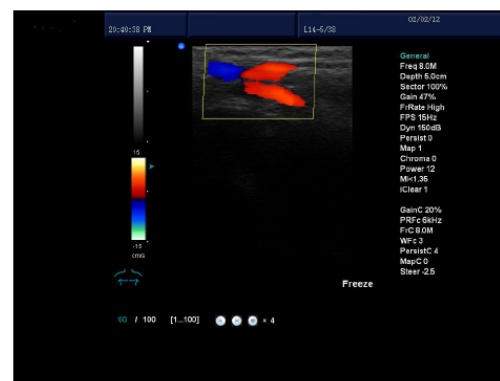
Estimate Weight Of Fetus

Gestational Age

Expected Date Of Confinement (LMP/BBT)

Fetal Biophysical Score

Fetus Growth Curve



#Letsgivemore

Thanks to your purchase, a donation will be made to a non-profit foundation that fights against breast cancer and helps most vulnerable communities.



All rights reserved © KALSTEIN France S. A. S.,
 2 Rue Jean Lantier • 75001 Paris •
 +33 1 78 95 87 89 / +33 6 80 76 07 10 •
<https://kalstein.eu>
 KALSTEIN FRANCE, S.A. S



Trolley Color Doppler

Model YR05149



Gynecology

All general measurements and calculations
Uterus, Ovary, Follicle
Gynecology Report

Urology

All general measurements and calculations
Kidney, Bladder, Residual Urine Volume
Urology Report

Andrology

All general measurements and calculations
Prostate, Testis
Prostate Specific Antigen (PSA)
Prostate Specific Antigen Density (PSAD)
Andrology report

Small Parts

All general measurements and calculations
Thyroid, Mammary Gland, Nodule
Small Parts Report

Cardiac

All general measurements and calculations
Heart Rate
Blood Flow Rate

Left Ventricle

Aorta

Mitral Valve

Ventricle (left/right)

Area Stenosis (% area Sten)

Vascular Diameter Stenosis (% Diam Sten)

Body Surface Area (BSA)

Cardiac Report

Peripheral Vascular

All general measurements and calculations

Area Stenosis

Vessel Diameter Stenosis

Peripheral Vascular Report

IMT auto measurements

Venous

All general measurements and calculations

Right and left extremity measurements

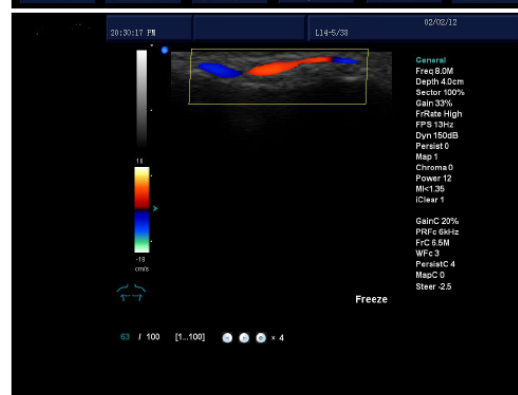
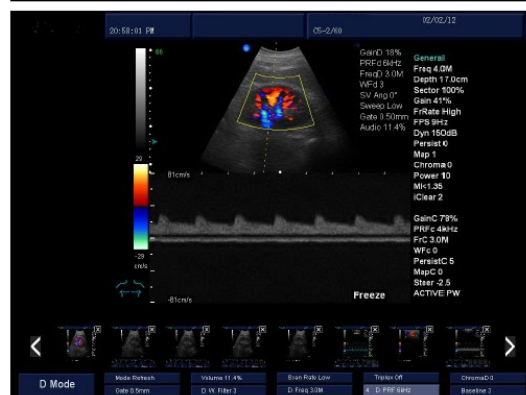
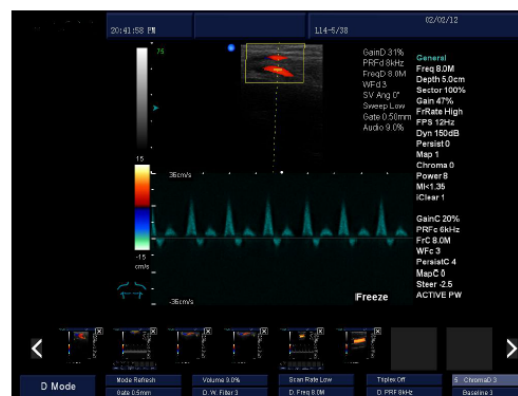
Venous patient report

Orthopedic

All general measurements and calculations

Right and left hip angle measurement

Hip angle patient report



#Letsgivemore

Thanks to your purchase, a donation will be made to a non-profit foundation that fights against breast cancer and helps most vulnerable communities.



All rights reserved © KALSTEIN France S. A. S.,
2 Rue Jean Lantier • 75001 Paris •
+33 1 78 95 87 89 / +33 6 80 76 07 10 •
<https://kalstein.eu>
KALSTEIN FRANCE, S.A. S





 **Kalstein**[®]
A different accompaniment, at your service

#LETSGIVEMORE 

**WITH THE
ACQUISITION
OF A KALSTEIN
EQUIPMENT**

YOU MAKE A CONTRIBUTION TO:



**Fundación
Jacinto Convit**

<https://www.jacintoconvit.org/>



<https://onetreepanted.org>



Humatem

Solidarité et coopération
biomédicale

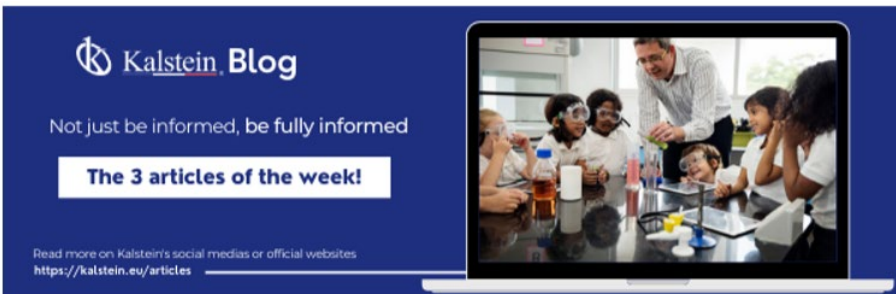
<https://www.humatem.org/>



**MANIAPURE
FOUNDATION USA**

<https://www.maniapurefoundation.org/>

Articles Kalstein
(Social Networks and Official Websites)



Kalstein Blog
Not just be informed, be fully informed

The 3 articles of the week!

Read more on Kalstein's social medias or official websites
<https://kalstein.eu/articles>



1
Read this ARTICLE NOW

How does the climate affect your microscope?

microscope is an instrument that allows observing and measuring objects that are too small to be seen with the naked eye. This is achieved through a complex system of lenses and mirrors, which form

Kalstein Blog

Article of the week:
How does the climate affect your microscope?

Read more on Kalstein's social medias or official websites
<https://kalstein.eu/articles>



2
Read this ARTICLE NOW

What is the importance of the laboratory refrigerator?

refrigerator is a device that is one of the most common pieces of equipment used in laboratories. It is a controlled environment (refrigerated space), various fluids and substances

Kalstein Blog

Article of the week:
What is the importance of the laboratory refrigerator?

Read more on Kalstein's social medias or official websites
<https://kalstein.eu/articles>

Kalstein Training Videos
(Youtube Channel and Official Websites)



Kalstein France - Jacinto Convit Foundation / Alliances

23 views • 3 years ago



Kalstein's Microscopes

445 views • 1 week ago



PARIS - FRANCE
HEADQUARTER
2 Rue Jean Lantier
75001 Paris - France

Tlf: +33 (0) 01 78 95 87 89
Cel: +33 (0) 6 80 76 07 10
sales@kalstein.eu

<https://kalstein.eu/>
<https://www.kalstein.fr/>

