



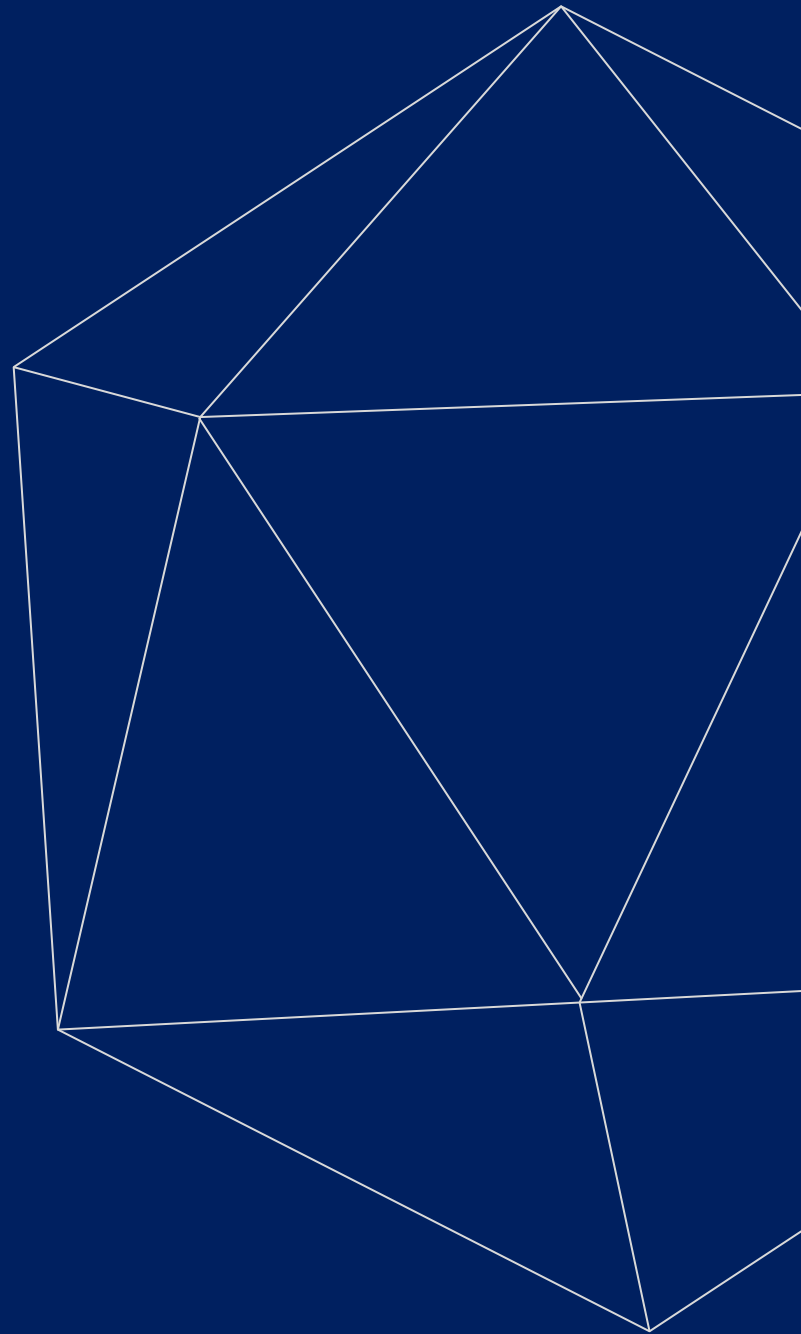
MEDICAL LINES

ULTRASOUND SCANNER



Kalstein®

A different accompaniment, at your service





Kalstein®

A different accompaniment, at your service

OUR SERVICES

Benefits and Support

In Kalstein France, we take care of the full satisfaction of our customers, that is why we provide value-added services of the highest level based on our experience.



Online Inductions and Trainings

In any part of the world, receive your induction or training from our specialized team of engineers



Quick Response

Our work team is always available to response all your consults or questions, in order to support you in any situation.



#Letsgivemore ♥

Thanks to your purchase, a donation will be made to a non-profit foundation that fights against breast cancer and helps most vulnerable communities.



Technical Support

Enjoy of personalized advice for the correct preventive and corrective maintenance of your equipment, thanks to Kalstein's manuals and articles, special catalogues and video tutorials.



Delivery Logistics

We take care of all the necessary logistics for the dispatch of your goods, whether is by sea, land or air.

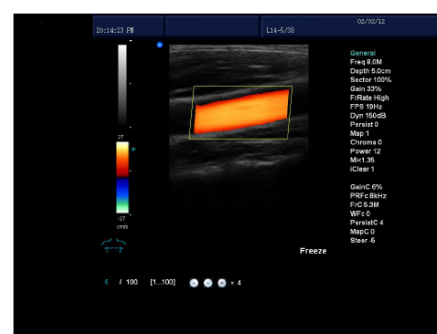
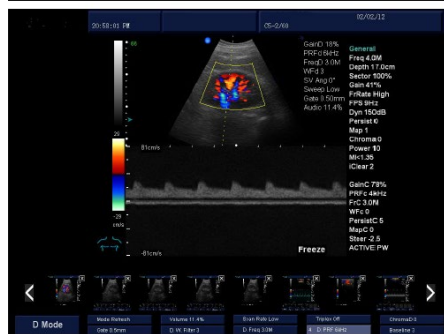
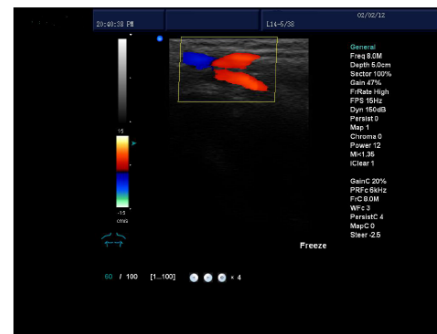
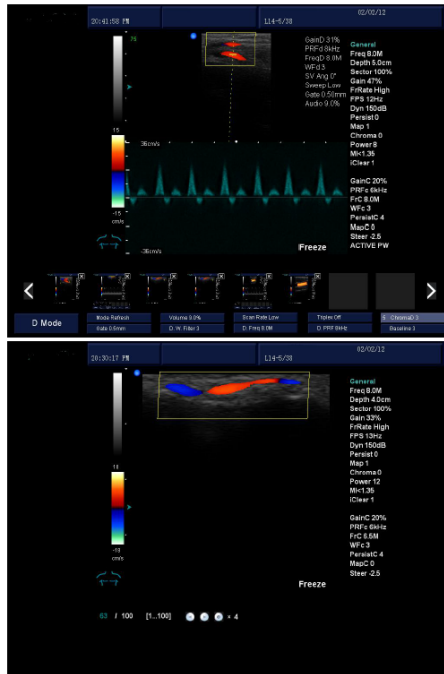


Kalstein Worldwide

With more than 25 years growing with our customers, Kalstein's multiformat and modern content, is now present in more than 10 countries and increasing.



PWCW 4D Color Doppler Model YR05151



#Letsgivemore

Thanks to your purchase, a donation will be made to a non-profit foundation that fights against breast cancer and helps most vulnerable communities.



All rights reserved (©) KALSTEIN France S. A. S.,
Optimum Business Center 450 Rue Baden Powell,
• 34000 Montpellier, France.
Tél: +33 467158849 / +33 680760710/ +33 663810023
<https://kalstein.eu>
KALSTEIN FRANCE, S.A. S





PWCW 4D Color Doppler

Model YR05151

Application

Abdomen / Cardiac / Obstetrics /
Gynecology / Urology / Andrology / Small
Parts / Vascular / Pediatrics /
Musculoskeletal

Electrical Power

Voltage 100 V~240 V
Power DC12.8V 3A
Frequency 50/60 Hz

Physical Specifications

Equipment size 365mm×300mm×75mm
Equipment weight 5.5kg
Packing size 490mm×270mm×490mm
Packing weight 10kg

Connectivity/Media/Peripherals

Transducer Ports 4
USB Ports 2
Hard Disc 64GB (SSD), 120G/200GB SSD
(Optional)
Ethernet Port 2(100Mb/1000Mb)
External Display VGA, HDMI,
Printer(Optional) USB Printer, Digital Laser
Printer, Digital B/W Thermal Printer
Printing Area Image, report, Image+report

Cine/Image Memory

Cine Memory 1200 frame (max)
Cine Review Speed 1, 2, 4, 8
Cine Review Loop YES
Cine Capture Function YES
DICOM Connectivity: DICOM3.0 Compliant

Image Storage

Storage Format: PNG, AVI, BMP, JPEG,
DICOM
Export Video Format: AVI
Export Image Format: PNG, JPEG, BMP,
DICOM
USB Flash Drive

Technology

Panoramic Imaging Tech
All-digital signal processing Tech
Multi-beam formation Tech
Speckle Reduction Tech
Tissue Harmonic Imaging Tech
Dynamic Tissue Optimization Tech
Duplex & Triplex Synchronous Display

Directional Power Doppler
Imaging Parameters Preset
Tissue Special Image
PW Auto Trace
Update in line
CF+B mode in one screen
Complex Model Imaging
IMT auto measurements
Virtual convex array
Trapezoidal imaging

General Performance

Digital Broadband 12288 channels
Beam-former Re-programmable
Transmit Voltage Adjustable (15 steps)
Beam-former Frequency Range 1~40 MHz

Pan/Zoom

Real-Time Image Zoom, Zoom Range:
100%~400%, Up/Down/Left/Right Inversion

Hardware Specification

LED Monitor
Size (Diagonal) 19"
Contrast Ratio 800:1
Resolution 1024×768 pixels
Brightness 230 cd/m²
Color Depth 24bit
Rotate Angle ± 90°
Grey Levels 256
Software: 4D Software, PW/CW software

Embedded Speakers

Impedance: 4Ω
Power: 5 W

UPS (Optional)

Imaging Performance

Startup Time (Max) Avg. < 90 seconds
Preset Switching Time Avg. < 1 second
Storage Time (Image to Disk) Avg. < 0.5
second

Imaging Modes

B, 2B, 4B, M, B/M, B/C, B/D, B/C/D,
B/CFM/D, PDI Color, Dual Color,
Simultaneous 2D/Color Compound, PW,
Duplex/Triplex, CFM, CDE, PD, Directional
PD, CD, B+CF

User Interface

- ✓ User Permission setting
- ✓ Intuitive Windows-based operating principles
- ✓ User-centric control panel with Home Base layout and control customization
- ✓ On/Off task light and back-lit illumination of control panel
- ✓ Variable brightness indicates active state of function keys
- ✓ Easily accessible, full size QWERTY keyboard for text entry, function keys and system programming
- ✓ Cine Playback, Multiple Arrows, Configurable Worksheets, Exam Review, Pictograms (Body Marks), System Setup Menu
- ✓ Online attention function, tell the user how to operate in the next step



#Letsgivemore

Thanks to your purchase, a donation will be made to a non-profit foundation that fights against breast cancer and helps most vulnerable communities.



All rights reserved © KALSTEIN France S. A. S.,
Optimum Business Center 450 Rue Baden Powell,
• 34000 Montpellier, France.
Tit: +33 467158849 / +33 680760710/ +33 663810023
<https://kalstein.eu>
KALSTEIN FRANCE, S.A. S





PWCW 4D Color Doppler

Model YR05151

B-Mode

Maps 17
 Focus Count Max. 4
 Gain 0~255
 TGC 8 Sliders
 Dynamic Range 0~150dB
 Depth Max. 30cm
 Acoustic Power 0 ~ 15
 Chroma 0~7
 Grayscale Levels 256
 Frame Rate Max.1028Hz
 Persistence/ Frame Average Up to 7
 Image Optimization 0~6
 Top/Bottom/Left/Right Reverse Yes
 Speckle Reduction Yes
 Second Harmonics Yes

M-Mode

Maps 16
 Chroma 16
 Sweep Speed 3
 Gain 0~255
 Distance Point-to-Point
 Max Steer Angle 15°
 Diameter Reduction Point-to-Point Heart
 Rate/Time/Distance/Slope
 Side-by-Side/Bottom

Color Mode

Gain 0~255
 Color Maps 0~6
 Doppler Steer Angles 7 Steps
 Wall Filter 0~3
 Spatial Filtering 0~3
 Acoustical Power 0 ~ 15
 Doppler Multi-Frequency 2MHz~10MHz
 Line Density Max 256 Lines
 Persistence/Frame Average 0~7
 Bloodstream Gain 0~127
 Packet Size 8~15 Baseline/Invert/Color
 ROI/M-Mode

PW Mode

Gain 0~255
 D Linear Velocity 0~2
 Doppler Steer Angles 7 Steps
 Edge Enhancement 0~7
 Wall Filtering 0~3
 Audio 0~255
 Correction Angle 80°/-80°
 Doppler Multi-Frequency 2MHz~10MHz
 Pulse Repetition Frequency 2kHz~6kHz

Chroma 0~7
 Baseline Adjustment 0~6
 Three Synchronizations Yes
 Spectrum Inversion Yes

Measurements Specifications

Analysis Packages

Basic, Obstetrics, Gynecology, Urology, Andrology, Cardiac, Peripheral Vascular Venous, Small Parts, Orthopedic

Basic Measurement

B-mode basic measurement Distance, Angle, Perimeter and Area (ellipse or track-based method), Volume, Histogram, Sectional Map

M-mode basic measurement Heart Rate, Time, Distance, Speed

Obstetrics

Applicable to multiple birth measurements.

All general measurements and calculations Obstetrical data versions to calculate gestational age:

— Two fixed data revisions: Asia & Europe

— One editable data version: User Custom

— Each version can estimate the gestational age and expected date of confinement

based on measured gestational sac (GS), biparietal diameter (BPD), crown-rump length

(CRL), femur length (FL), humeral length (HL), abdominal transverse diameter (ATD),

vertebral length (LV), occipitofrontal diameter (OFD), abdominal circumference (AC) and

head circumference (HC)

Obstetrical Report

Amniotic Fluid Index (AFI)

BPD/OFD, FL/AC, FL/BPD and HC/AC

ratio

Estimate Weight Of Fetus

Gestational Age

Expected Date Of Confinement (LMP/BBT)

Fetal Biophysical Score

Fetus Growth Curve



#Let's Give More

Thanks to your purchase, a donation will be made to a non-profit foundation that fights against breast cancer and helps most vulnerable communities.



All rights reserved © KALSTEIN France S. A. S.,
 Optimum Business Center 450 Rue Baden Powell,
 • 34000 Montpellier, France.
 Tit: +33 467158849 / +33 680760710/ +33 663810023
<https://kalstein.eu>
KALSTEIN FRANCE, S.A. S



PWCW 4D Color Doppler

Model YR05151



Gynecology

All general measurements and calculations
Uterus, Ovary, Follicle
Gynecology Report

Urology

All general measurements and calculations
Kidney, Bladder, Residual Urine Volume
Urology Report

Andrology

All general measurements and calculations
Prostate, Testis
Prostate Specific Antigen (PSA)
Prostate Specific Antigen Density (PSAD)
Andrology report

Small Parts

All general measurements and calculations
Thyroid, Mammary Gland, Nodule
Small Parts Report

Cardiac

All general measurements and calculations
Heart Rate
Blood Flow Rate

Left Ventricle

Aorta

Mitral Valve

Ventricle (left/right)

Area Stenosis (% area Sten)

Vascular Diameter Stenosis (% Diam Sten)

Body Surface Area (BSA)

Cardiac Report

Peripheral Vascular

All general measurements and calculations

Area Stenosis

Vessel Diameter Stenosis

Peripheral Vascular Report

IMT auto measurements

Venous

All general measurements and calculations

Right and left extremity measurements

Venous patient report

Orthopedic

All general measurements and calculations

Right and left hip angle measurement

Hip angle patient report

Probe	Convex Probe	Linear Probe	Intra-Cavity Probe	Micro-convex probe	4D Volume Probe	Phased Array Probe
Frequency	Central 3.5 MHz (2.0/3.0/3.5/4.0/5.5 MHz)	Central 7.5 MHz (6.0/6.5/7.5,10.0/12.0MHz)	Central 6.5 MHz (5.0/6.0/6.5/7.5/9.0 MHz)	Central 4.0 MHz (2.0/3.0,3.5/4.0/5.0/6.0/6.5/7.5/9.0MHz) Pediatric Use (2.0/3.0,3.5/4.0/5.5,6.5/7.5/10.0MHz)	Central 3.5 MHz (2.0/3.0/3.5/4.0/5.5,6.5MHz)	(2.0/3.0/3.5/4.0/5.0/6.0/6.5/7.5/9.0/10.0 MHz)
Pitch	0.516mm	0.352mm	0.216 mm			
Radius	60mm	N/A	10 mm			
Elements	128	128	128	128	128	128



#Letsgivemore ❤️

Thanks to your purchase, a donation will be made to a non-profit foundation that fights against breast cancer and helps most vulnerable communities.



All rights reserved © KALSTEIN France S. A. S.,
Optimum Business Center 450 Rue Baden Powell,
• 34000 Montpellier, France.
Tit: +33 467158849 / +33 680760710/ +33 663810023
<https://kalstein.eu>
KALSTEIN FRANCE, S.A. S





 **Kalstein**[®]
A different accompaniment, at your service

#LETSGIVEMORE 

**WITH THE
ACQUISITION
OF A KALSTEIN
EQUIPMENT**

YOU MAKE A CONTRIBUTION TO:



**Fundación
Jacinto Convit**

<https://www.jacintoconvit.org/>



<https://onetreepanted.org>



Humatem

Solidarité et coopération
biomédicale

<https://www.humatem.org/>



**MANIAPURE
FOUNDATION USA**

<https://www.maniapurefoundation.org/>

Articles Kalstein
(Social Networks and Official Websites)



Kalstein Blog
Not just be informed, be fully informed
The 3 articles of the week!
Read more on Kalstein's social medias or official websites
<https://kalstein.eu/articles>



1
Read this ARTICLE NOW
How does the climate affect your microscope?
A microscope is an instrument that allows observing and measuring objects that are too small to be seen with the naked eye. This is achieved through a complex system of lenses and mirrors, which form...

Kalstein Blog
Article of the week:
How does the climate affect your microscope?
Read more on Kalstein's social medias or official websites
<https://kalstein.eu/articles>



2
Read this ARTICLE NOW
What is the importance of the laboratory refrigerator?
A refrigerator in a laboratory is one of the most important pieces of equipment. It is used to maintain, in a controlled environment (refrigerated space), various fluids and substances...

Kalstein Blog
Article of the week:
What is the importance of the laboratory refrigerator?
Read more on Kalstein's social medias or official websites
<https://kalstein.eu/articles>

Kalstein Training Videos
(Youtube Channel and Official Websites)



Kalstein France - Jacinto Convit Foundation / Alliances

23 views • 3 years ago



Kalstein's Microscopes

445 views • 1 week ago



MONTPELLIER - FRANCE
HEADQUARTER
Optimum Business Center,
450 Rue Baden Powell,
34000 Montpellier - France.

Fax: +33 (0) 4 67 15 88 49
Tif: +33 (0) 6 80 76 07 10
sales@kalstein.eu

<https://kalstein.eu/>
<https://www.kalstein.fr/>

Official Websites for Latin America.

