

# YR05086

## 2~8 °C Biomedical Refrigerator



**YR05086 2~8°C Biomedical Refrigerator (656 liters)** is widely used in hospitals pharmacy stores and laboratories. This is for placing and preserving storage such as drugs, vaccines, enzymes, hormones, stem cells, extracted RNA and gene libraries and important biological and chemical reagents.

## FEATURES



### Fast pull down

Real air-forced cooling system



### Super large space

656-liter (23.16 cu.ft) space, more storage



### Suction circulation system

Big fans for better temp uniformity



### Universal castor wheels

Castors with brake & leveling feet



### Lockable doors

2 Standard locks with keys for doors



### High quality steel material

Antibacterial and corrosion resistant



### Precise temp. control

Temp. control accurate to 0.1°C



### 5 types of alarm

Audible and visual alarms



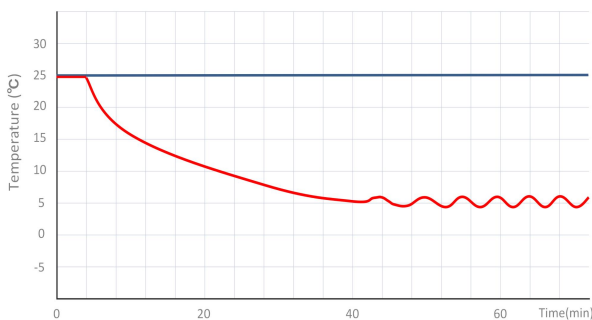
### Variable space

Height adjustable shelves

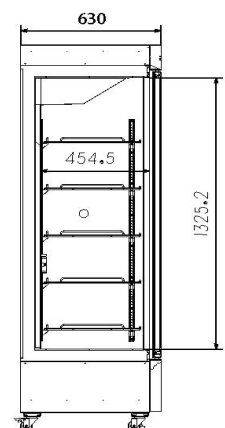
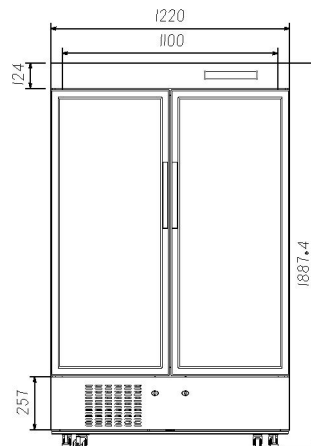


### Eco-friendly

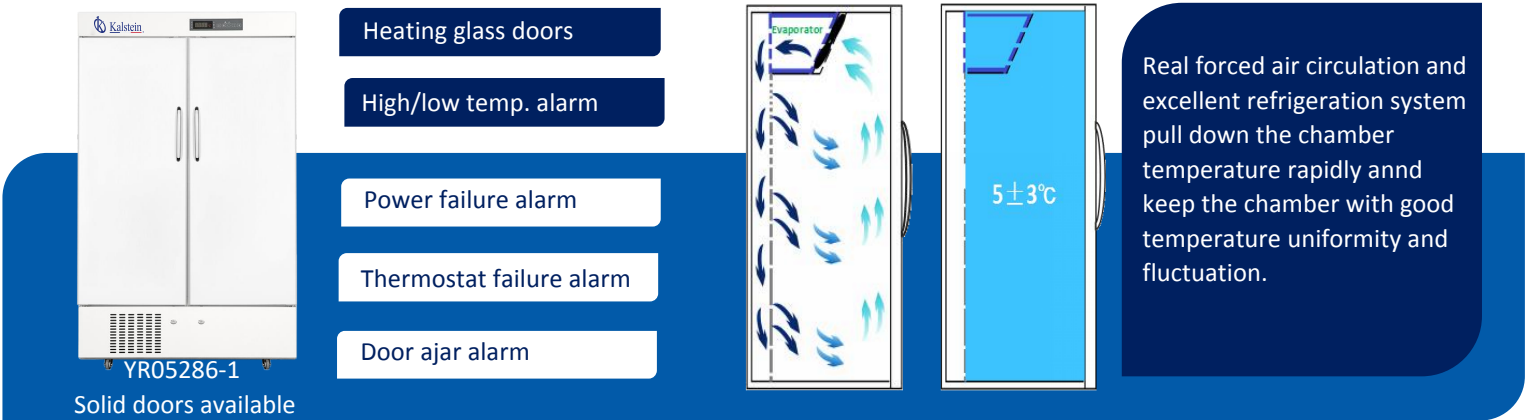
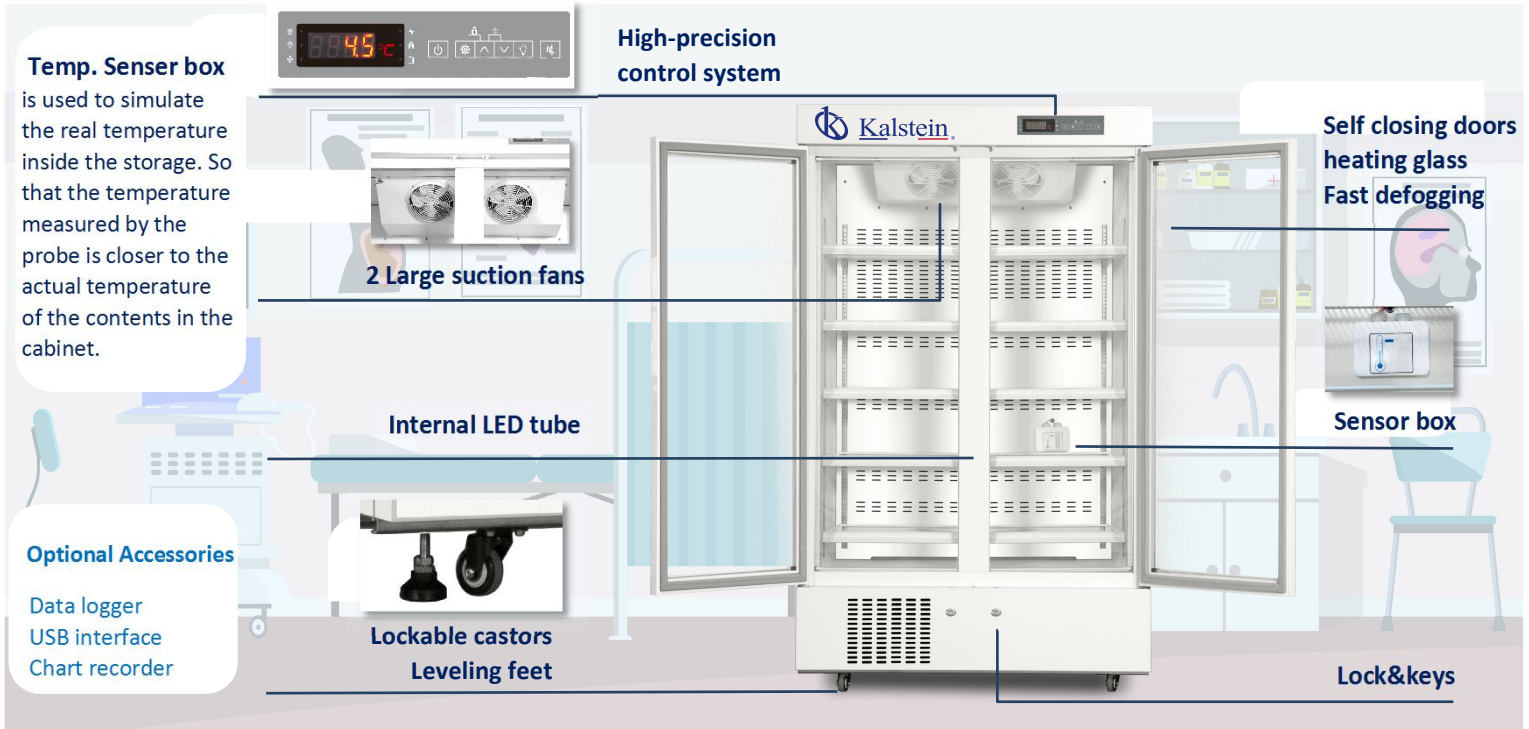
CFC-free refrigerant and energy-saving



YR05086 PULL DOWN TEST



# STRUCTURE



Real forced air circulation and excellent refrigeration system pull down the chamber temperature rapidly and keep the chamber with good temperature uniformity and fluctuation.

# PARAMETER

Performance		Refrigeration System		Alarms	
Cooling method	Forced Air Cooling	Refrigerant	R290	High/low temperature	Y
Defrost	Auto	Temp. controller	Microprocessor	Power failure	Y
Shelf/drawer	Shelves/10	Sensor	NTC	Sensor error	Y
Temperature range	2°C~8°C	Display	Digital display	Controller failure	Y
Ambient temperature	10~32°C	External material	Sprayed steel	Door ajar	Y
Noise (db)	52	Compressor QTY	1	Power failure backup	8 hours
Electrical Data		Dimensions		Other	
Voltage frequency( V/Hz)	220V 50Hz/60Hz	Package size(W*D*H)(mm)	1335*710*2000	Inside door	10 shelves
Power (W)	385W	Capacity (L/cu.ft)	656/23.16	Remote alarm port	Optional
Current (A)	2.3A	Exterior size(W*D*H)(mm)	1240*630*1895	Access port QTY/Dia.	1/25mm
Power consumption	5.75kWh/24h	Interior size(W*D*H)(mm)	1100*454*1325	Internal material	Sprayed steel